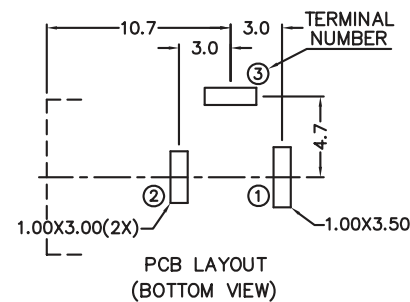
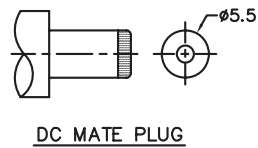
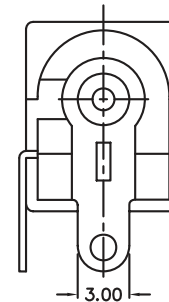
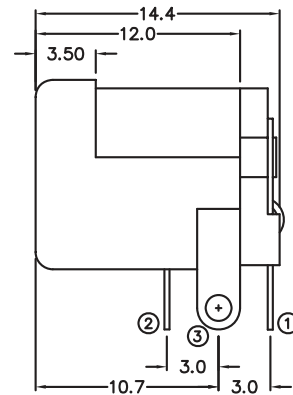
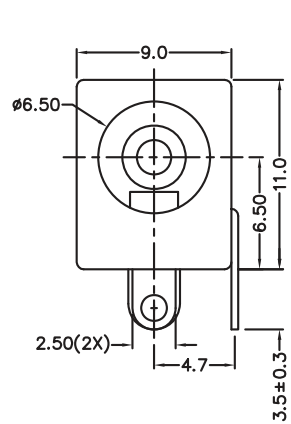


Technical parameters:
 Contact resistance: 0.03Ω, max
 Insulation resistance: 100MΩ, min
 Pressure: AC500V (50Hz) / 1minute
 Rated Load: DC 16V 2.0A Max
 Actuating Force: 3~20N
 Life: 5000 times
 Operating Temperature: -30°C ~ 70°C

Material:

Centre Pin : Copper
 Terminal 1 : Brass
 Terminal 2 : Copper alloy
 Terminal 3 : Brass
 Housing : PBT
 Cover : PBT



| | |
|------------|---------|
| MODEL NO. | DC-005A |
| SCHEMATIC | |
| CENTER PIN | ø2mm |
| | |

General description of ordering code

FAMILY
DCP - **DC005A20**



euro-conn



UNITS: mm

SHEET SIZE: ISO A4

SCALE:

> 0 ~ 3

> 3 ~ 18

> 18 ~ 50

> 50 ~ 120

± 0.12

± 0.15

± 0.3

± 0.5

! I prodotti e le caratteristiche possono cambiare senza preavviso.
 The products and their features may change without notice.

DC - POWER