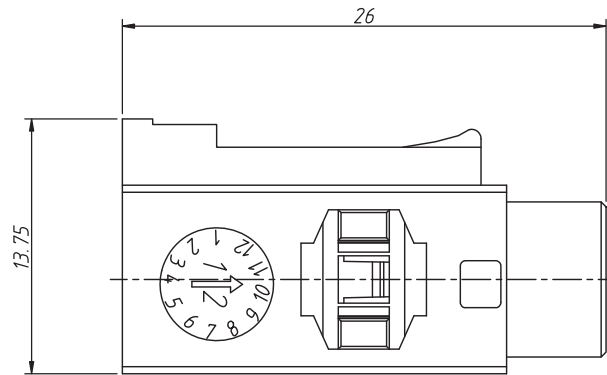


**Material:**

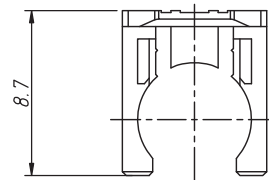
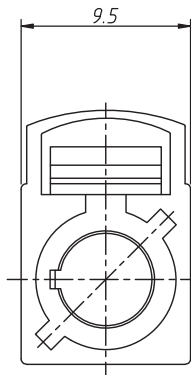
Housing:PA66+30%GF  
 Snap Ring:PA66+30%GF  
 Snap Ring:Beryllium Copper  
 Copper Tube:Brass,Nickel Plating  
 Insulator:PTFE  
 Pin Contact:Beryllium Copper,Gold Plating  
 Body:Brass,Nickel Plating

**Electrical:**

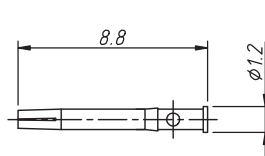
Frequency Range:DC ~ 4 GHz  
 Nominal Impedance:50 ohms  
 VSWR:<1.3  
 Withstanding Voltage:335 V  
 Insulator Resistance:1000 MΩ  
 Contact Resistance:6 Milliohms Max(Center Contact)  
 1 Milliohms Max(Outer Contact)  
 Operating Temperature:-40°C ~ +85°C  
 Environmental:Lead Free, RoHS compliant



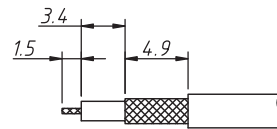
Plastic Shell



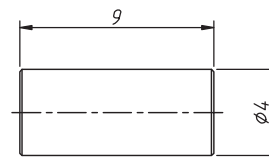
Snap Ring



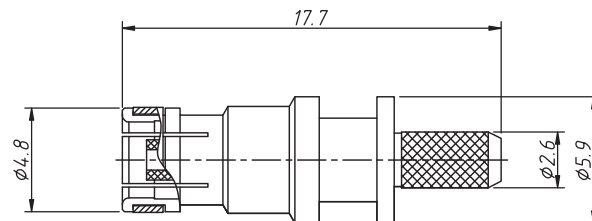
Pin Contact



Cable Stripping Size



Copper Tube



Body

**General description of ordering code**

FAMILY	MODEL	TYPE	VERSION	BODY
FKR	60	P	D	XXXX-1-G

Card slot direction	Code	Color	RAL	Order Information
	A	Black	sim.9005	FKR 60 - PD - 9005 - 1-G
	B	White	sim.9001	FKR 60 - PD - 9001 - 1-G
	C	Blue	sim.5005	FKR 60 - PD - 5005 - 1-G
	D	Bordeaux Violet	sim.4.004	FKR 60 - PD - 4.004 - 1-G
	E	Green	sim.6002	FKR 60 - PD - 6002 - 1-G
	F	Brown	sim.8011	FKR 60 - PD - 8011 - 1-G
	G	Grey	sim.7031	FKR 60 - PD - 7031 - 1-G
	H	Violet	sim.4.003	FKR 60 - PD - 4.003 - 1-G
	I	Beige	sim.1001	FKR 60 - PD - 1001 - 1-G
	K	Curry	sim.1027	FKR 60 - PD - 1027 - 1-G
	L	Carmine Red	sim.3002	FKR 60 - PD - 3002 - 1-G
	M	Pastel orange	sim.2003	FKR 60 - PD - 2003 - 1-G
	N	Pastel Green	sim.6019	FKR 60 - PD - 6019 - 1-G
	Z	Water Blue	sim.5021	FKR 60 - PD - 5021 - 1-G

UNITS: mm

SHEET SIZE: ISO A4

SCALE: ----

> 0 ~ 3

> 3 ~ 18

> 18 ~ 50

> 50 ~ 120

± 0.12

± 0.15

± 0.3

± 0.5

! I prodotti e le caratteristiche possono cambiare senza preavviso.  
 The products and their features may change without notice.

**RF COAXIAL**



**euro-conn**

