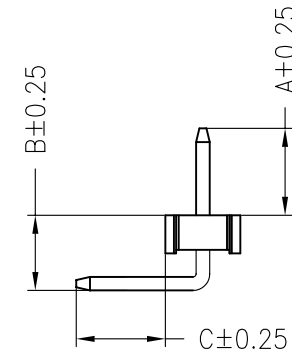
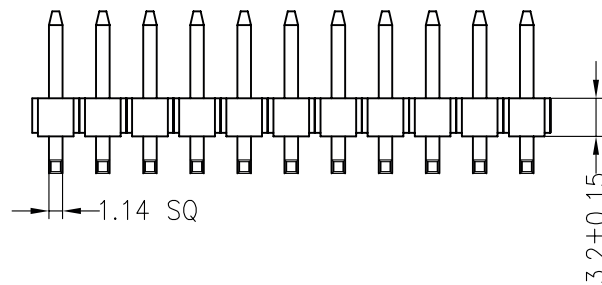
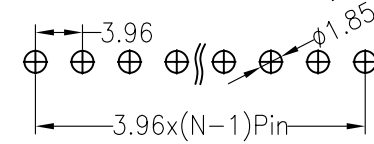
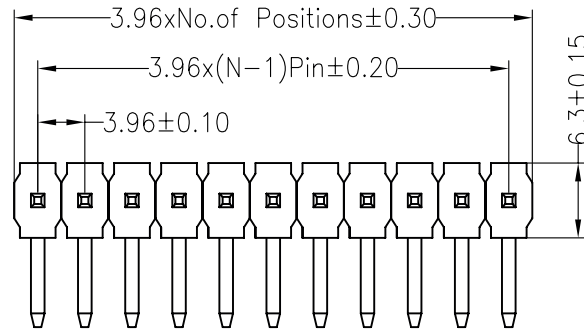


SPECIFICATIONS

Rated Current:5.0AMP
 Contact Resistance:20mΩ Max
 Withstand Voltage:500V AC/DC
 Insulation Resistance:1000MΩ Min
 Operation Temperature:-40°c to +105°c

Contact Material:Brass
 Contact Plating:Sn Over Ni
 Insulator Material:Polyester(UL94V-0)
 Standard: LCP
 Max.Processing Temp: 230°C for 30-60 seconds
 (260°C for 5 seconds)

Recommended P.C.B Layout(Top Side)
 (PCB BOARD TOLERANCE±0.05)



General description of ordering code

FAMILY	PITCH	N° ROWS	N° PIN P.R.	VERSION	CLIP PLATING	HEIGHT	INSULATOR	*SP_code	TYPE	PACKAGE	
PH	396	1	XX	R [right angle]	F [flash gold]	XXX [length A]	M [insulator 3.20 mm]	--	00	T [tube]	
					T [tin]						V [bag/tray]

*SP_code=Alternate custom

Dimension antitheses list			
ITEM	A	B	C
Standard	8.00	6.50	3.50
Alternate			



euro-conn



FILE N. E356435

UNITS: mm

SHEET SIZE: ISO A4

SCALE:

> 0 ~ 3

> 3 ~ 18

> 18 ~ 50

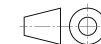
> 50 ~ 120

± 0.12

± 0.15

± 0.3

± 0.5



First angle projection

PIN HEADER