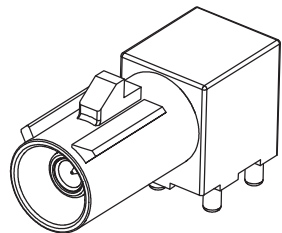
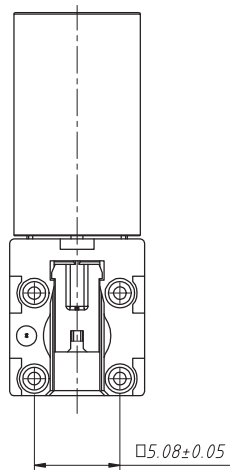


Recommended PCB Layout  
Tolerance: ±0.05mm



**Material:**

Core Pin: Brass,  
Gold Plating On Contact Area  
Tin Plating On Solder Tails  
Core Pin Holder: PA6T, Black  
Interface Housing: PA6T  
Outer Housing: Zn Alloy, Tin Plating

**Electrical:**

Impedance: 50 Ω  
Frequency Range: DC to 6GHz  
Test Voltage: 750 V rms  
Working Voltage: AC 335Vrms  
Power Current: 1 A DC  
Insulation Resistance: 1000M Ω Initial  
Voltage Standing Wave Ratio (VSWR): SWR ≤ 1.4, 0 ~ 2GHz  
SWR ≤ 1.5, 2 ~ 3GHz

Mating Cycles: 25 Cycles Min  
Engagement Force: 40 N Max  
Disengagement Force: 2 N Min  
Retention Force: 110 N Min  
Coding Efficiency: 80 N Min  
Temp. Range: -40°C to +105°C

Card slot direction	Code	Color	RAL	Order Information
	A	Black	sim.9005	FKR70-JR-9005-1-G
	B	White	sim.9001	FKR70-JR-9001-1-G
	C	Blue	sim.5005	FKR70-JR-5005-1-G
	D	Bordeaux Violet	sim.4004	FKR70-JR-4004-1-G
	E	Green	sim.6002	FKR70-JR-6002-1-G
	F	Brown	sim.8011	FKR70-JR-8011-1-G
	G	Grey	sim.7031	FKR70-JR-7031-1-G
	H	Violet	sim.4003	FKR70-JR-4003-1-G
	I	Beige	sim.1001	FKR70-JR-1001-1-G
	K	Curry	sim.1027	FKR70-JR-1027-1-G
	L	Carmin Red	sim.3002	FKR70-JR-3002-1-G
	M	Pastel orange	sim.2003	FKR70-JR-2003-1-G
	N	Pastel Green	sim.6019	FKR70-JR-6019-1-G
	Z	Water Blue	sim.5021	FKR70-JR-5021-1-G

**General description of ordering code**

FAMILY	MODEL	TYPE	VERSION	BODY
FKR	70	J	R	XXXX-1-G



euro-conn



UNITS: mm

SHEET SIZE: ISO A4

SCALE: ----

> 0 ~ 3

> 3 ~ 18

> 18 ~ 50

> 50 ~ 120

± 0.12

± 0.15

± 0.3

± 0.5

! I prodotti e le caratteristiche possono cambiare senza preavviso.  
The products and their features may change without notice.

**RF COAXIAL**